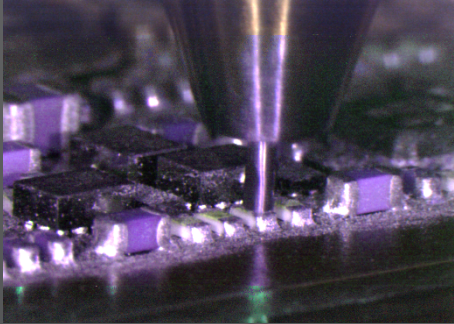


# Summit LXi

Large Board Rework System



## Largest Installed Base • Excellent Thermal Performance • Process Flexibility Ease of Operation • Global Support • Industry Leading Reliability

**Large Board Rework** – The only rework system designed specifically for large boards (not adapted).

- Up to 1.2m board size

**Auto Profiling Capability** – Fast and easy profile creation. Simply enter the desired product temperatures. After thermal profile is created, the entire reflow process is built automatically and ready to run.

**Independent Pick and Place** – Motorized reflow head driven by an advanced motion system with programmable force control provides precision with total flexibility.

**Nitrogen Inert Environment** – Programmable process control applies nitrogen only when needed.

- Maximized N2 savings

**Non-Contact Site Scavenging** – Dynamic height-sensing control of distance between the scavenger tip and PCB (scavenger gap).

**Efficient Convection Heating** – Closed-loop temperature control ensures a more even heat distribution as compared to IR heating.

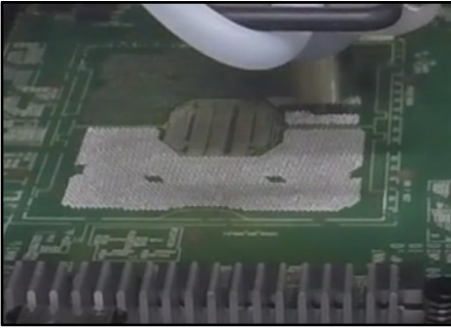
- Boost flow increases heating capacity at lower temperatures
- Industry-leading speed, control, repeatability

**“1-2-3-Go” Graphical User Interface** – Proprietary SierraMate™ Windows® based software provides an easy to use “1-2-3-Go” graphical user interface improving user experience.

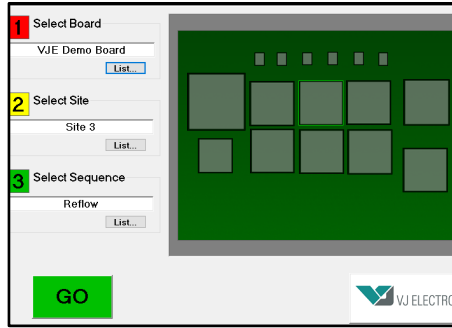
**Comprehensive Tooling** – Wide range of tooling available to meet your current and future rework needs.

**Industry 4.0 Compliant** – Automated data/event logging for traceability.

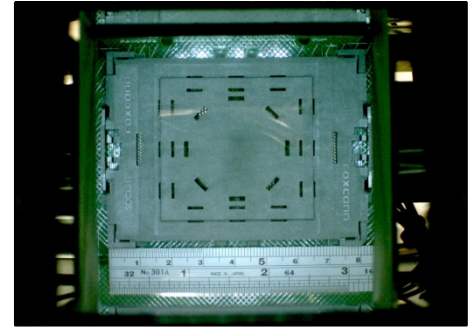
- Enhanced profile sharing and user collaboration



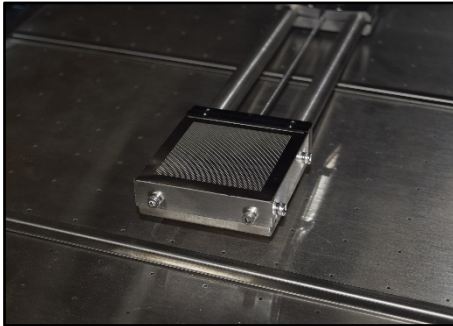
SOLDER SCAVENGER WITH DYNAMIC HEIGHT SENSING



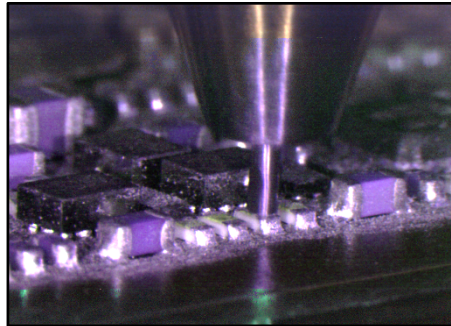
1-2-3-GO SIERRAMATE™ GRAPHICAL USER INTERFACE



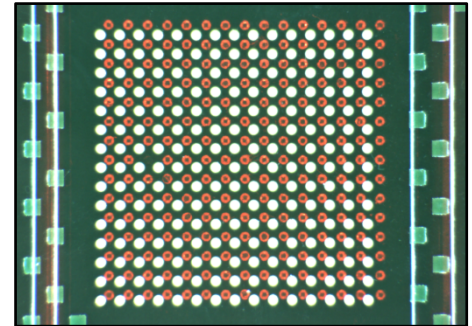
80 MM SQUARE FOV  
90 MM OPTION AVAILABLE



DUAL CONVECTION BOTTOM HEATERS



01005 REWORK



OPTICAL ALIGNMENT SYSTEM

### Technical Specifications

Placement Capability	0.0010" (25μ) mean + 3σ	
Top Heater	2.2kW Focused Convection	
Bottom Heater	8.0kW Convection Plenum	10.0kW Convection Plenum (option)
Z-Axis Motion	Independent & Programmable Z-Height Pickup Tube Independent & Programmable Z-Height Top Heater	
Theta Motion	Programmable Motorized Theta - 360°	
Field of View	3.2" (80mm) Square / 90 mm option	
Max Board Size	24x36" (600x900mm)	26x48" (650x1200mm) (option)
Component Range	0.005" (0.12mm) to 8" (200mm) Connectors	
Temperature Control	K-Type Thermocouple (Closed-Loop)	
Thermocouple Jacks	8	16 (option)
Compliance	CE, CAN/CSA, UL 61010-1	
Special Features	Automatic Component and Vision Shuttle Programmable Placement Force Control Automatic Component Height Sensing & Alignment Height	

## Why choose VJE

In a highly competitive SMT manufacturing market, quality and productivity are critical. VJ Electronix develops and manufactures all their products with this in mind. For decades, we have secured leading positions in a variety of markets through technological firsts and a variety of innovative customer-specific solutions.

VJ Electronix is the leader in rework equipment. VJ Electronix equipment helps reduce manufacturing costs and improve product quality.

VJ Electronix  
19 Alpha Road  
Chelmsford, MA, 01824  
USA

Phone: +1 978 486 4777  
[www.vjelectronix.com](http://www.vjelectronix.com)

VJ Offices:  
Bohemia NY  
East Haven CT  
Suzhou, China

Hartzviller, France  
Bengaluru, India  
Budapest, Hungary