

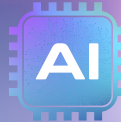
SEMINFINITY

[SNAPVISION][SNAPCURE]

MULTI FUNCTION PLATFORM

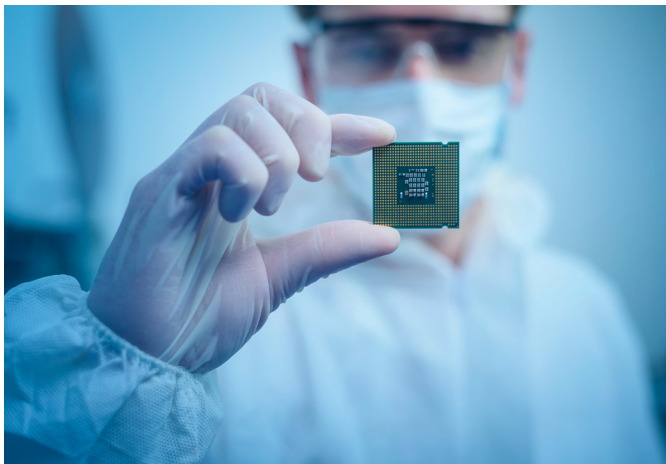
COMPLIANCES

- ISO6 (Class 1000)
- ESD Level 1
- Full CE / UL Certification
- Semi S2/S8 Compliant
- SECS/GEM ready
- EMC



HIGH UPH MULTI-FUNCTION PLATFORM

A unique concept for high-volume production with optimized process stations (up to 4 in Dual Lane) and dual process integration.



UNIQUE CONCEPT

CONFIGURATION FLEXIBILITY

- [SNAPVISION][SNAPCURE] inside.
- Multi-language 32" tactile HMI.
- No air supply required.
- Multi process sensors closed loop process.
- Fine pitch Datamatrix reading.
- ISO6 (Class 1000) / ESD Level 1 / Full CE / UL Certification / Semi S2/S8 Compliant SECS GEM ready / EMC / F47NPA79.

PRODUCTIVITY

- Less than 2 seconds inspection time.
- Curing time under 5 seconds per tray.
- Dual lane.

TRACEABILITY [SMARTBOX]

OPTIMIZATION

- Floor space and Energy efficient.

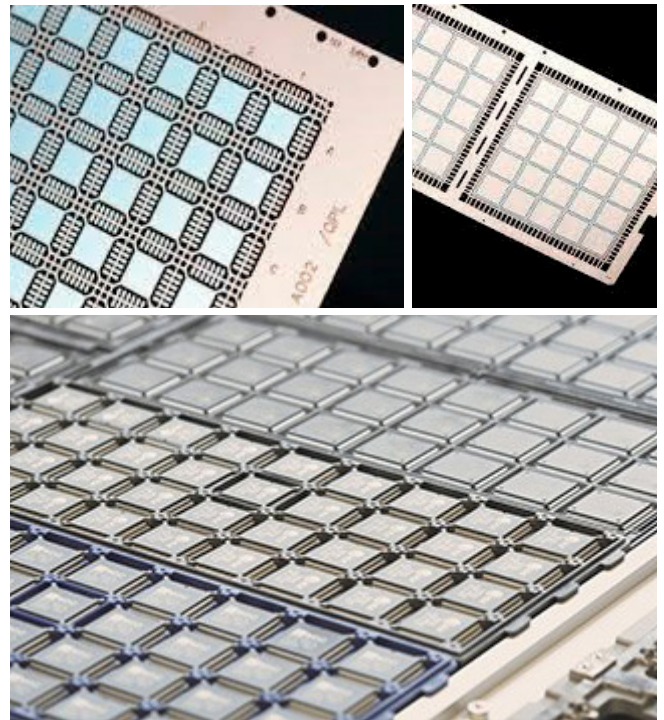
STANDARD OPTIONS



FEATURES

Single or dual lane capability up to 460 mm.

- Automatic width adjustment.
- Inlet / Outlet shutters.
- Conveyor direction L to R (R to L optional).
- Wave length controller and closed-loop radiation
 - Ionizer
 - Real time process monitoring
 - Multi-language user interface & documentation



OPTIONS

- Process related sensors.
- ESD impurity sensor
 - Humidity and temperature
 - UV wavelength and dose
 - More on demand
- Dispensed geometry element trend analysis with up-stream communication.
- Local process supervision display.
- Industry 4.0 - SECS/Gem, UAC, Hermes, Opcon, IPC-CFX, Process Tracker & more on demand.



SPECIFICATIONS SINGLE AND DUAL LANE BELT

Dimensions	1200x1850x1650 mm
Voltage	AC 110/220V, 50/60Hz
Weight	Approx: 850kg
Conveyor type	Belt
Max conveyor weight	10 kg (22lbs)
Dual mode max width	250 mm
Single mode max width	460 mm

[SNAPVISION]

[WORLD'S BEST PRODUCTIVITY]

INSPECTION FIXED CAMERA BASED

- Resolution up to 20um.
- Standard size JEDEC TRAY.
- Max cycle time less than 2 sec. by lane.
- Light source: multi-LED illumination.
- No periodical calibration of camera needs.



Inspection Unit

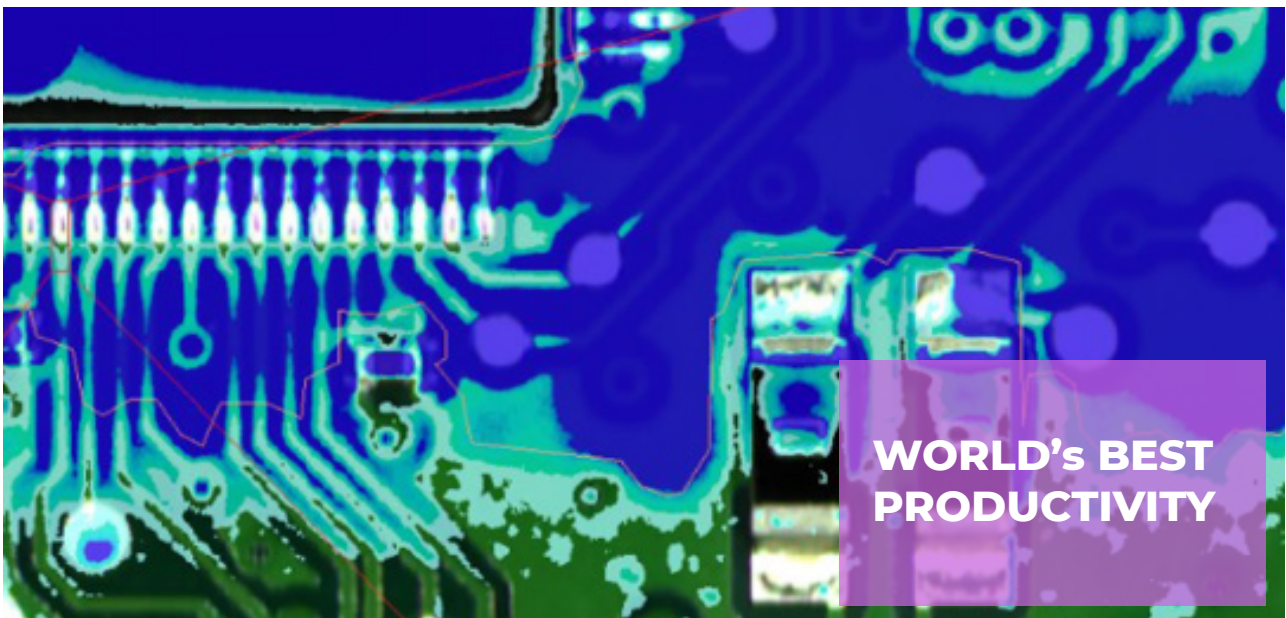
Up to 84 mega pixels (25 um)
Color camera
Light source: multi-color LED Illumination
Solder meniscus control with blue-red-white LED cluster based on different illumination angle
Adjustable illumination profiles
Triggered light control
Rectified image

System-PC

Industrial PC with Intel Core i7. Windows 10 64 bits.
Monitor 24" Full-HD

Inspection Speed

1 to 3 secs. full area (double-sided) independent of the number of inspection parts

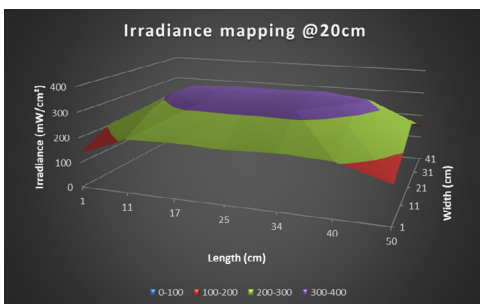


[SNAPCURE]

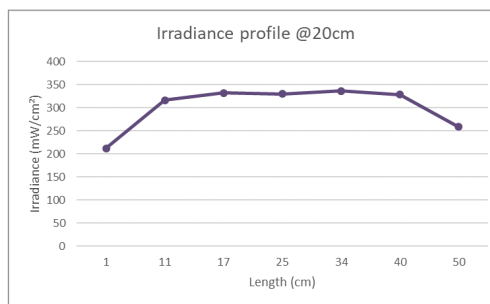
[WORLD'S BEST EFFICIENCY]

UV/IR LED MATRIX PANEL

- Up to two lamps:
Lamps size: 250 x 400 mm or 500 x 400 mm
- Single wavelength IR LED 810 nm
- Single wavelength UV LED 275 nm, 365 nm or 395 nm
- Multi wavelength UV LED lamp 275 nm, 365 nm and 395 nm
- Radiation set up:
 - up to 800 mW/cm²
 - accumulated radiation ∞mJ/cm²
 - (e.g. 500mW/cm² x 5 sec=2500mJ/cm²)
- Guaranteed life time 20.000 hours
- Optional chamber (Vacuum / N₂)



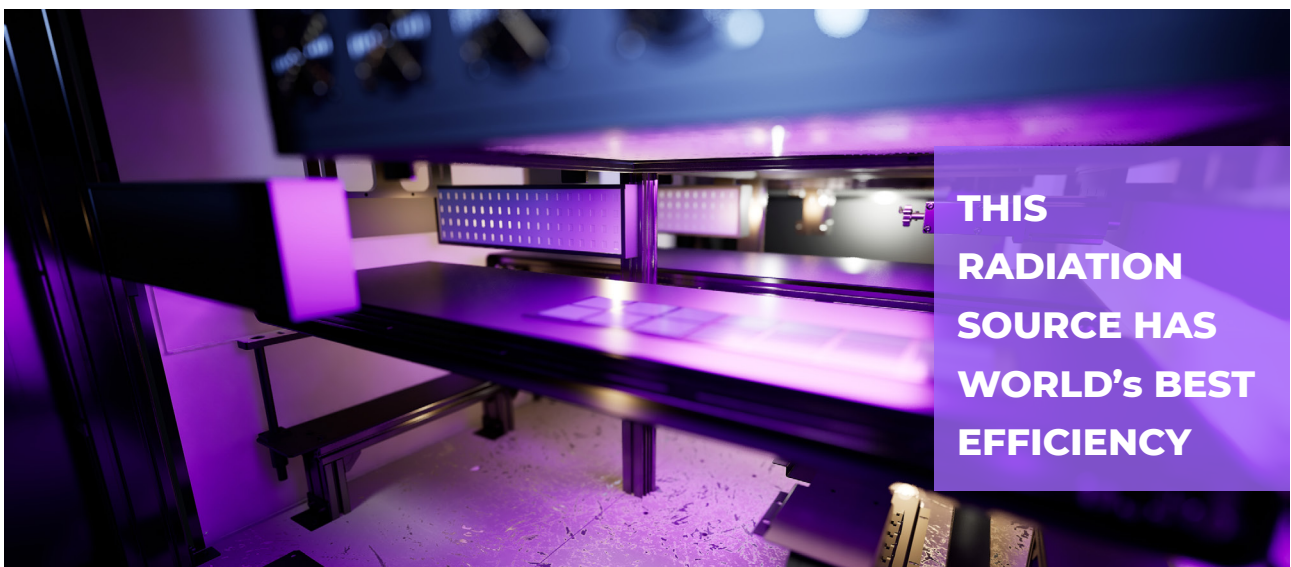
Irradiance mapping



Irradiance profile

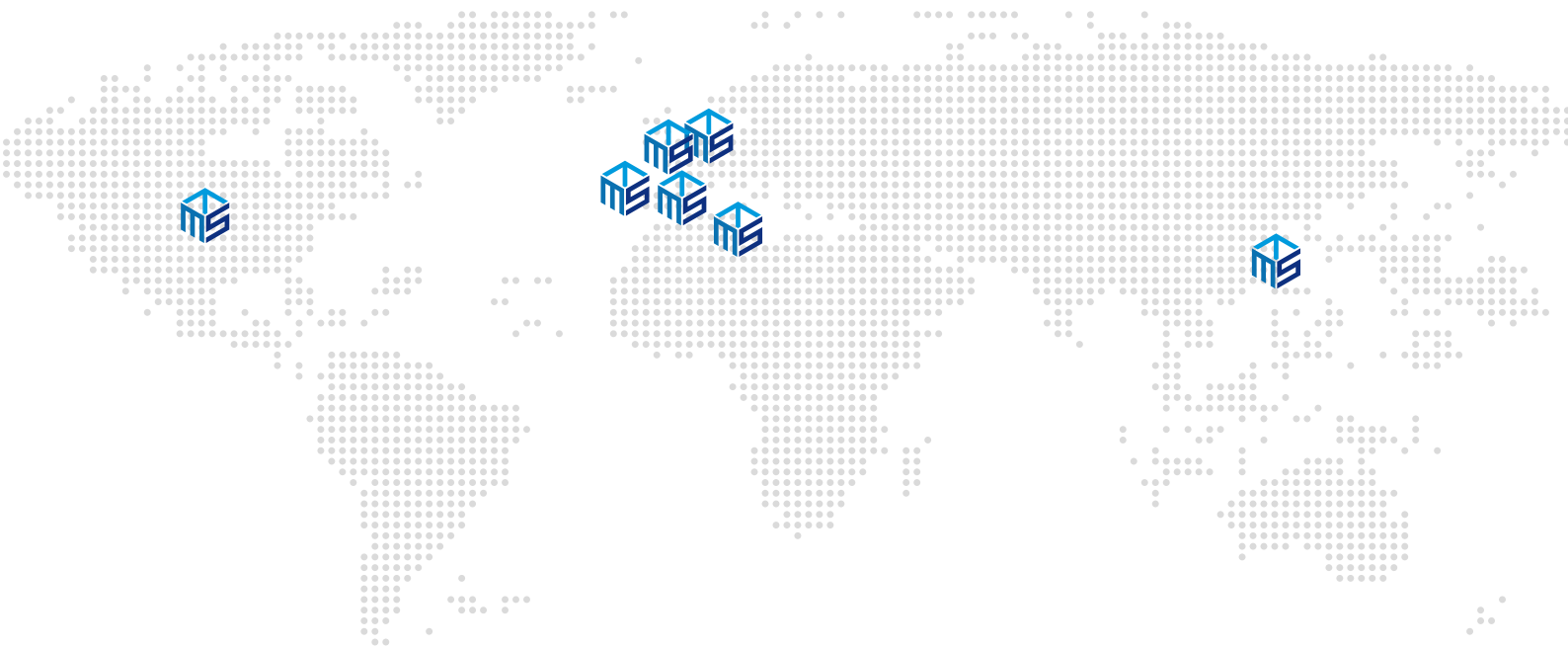


Guaranteed life time 20.000h



**THIS
RADIATION
SOURCE HAS
WORLD'S BEST
EFFICIENCY**

GLOBAL NETWORK



 PART OF INCORPORATECHNO

WWW.MSTECHCORP.EU

FACTORYCENTER
SEOUL - BARCELONA

BUSINESSCENTER
KOREA - MEXICO - GERMANY
FRANCE - SPAIN - PORTUGAL - TUNISIA

TESTCENTER
KOREA - SPAIN - FRANCE

FACTORYCENTER
BARCELONA

Ctra. C-31, 148.4. Masia Les Planes, 20.
Camí de Les Planes. 08880 Cubelles,
Barcelona. Spain

administrative@mstechcorp.eu

BUSINESSCENTER

sales@mstechcorp.eu

services@mstechcorp.eu

