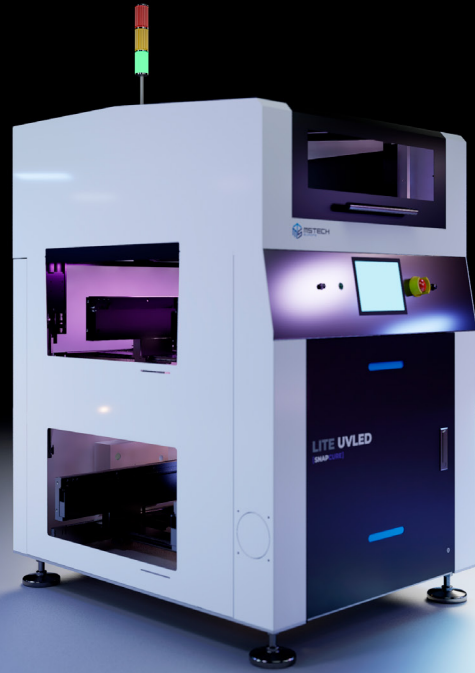


LITE UVLED

[SNAPCURE]

**ADVANCED
ULTRA VIOLET
CURING SYSTEM**



CURING IN SECONDS

INTEGRATED UV IRRADIATION

The **High Performance Flat Panel Light Source** is incorporated into our fully integrated Lite Modular System. To meet different production needs a simple but flexible **Control System** for transport conveyors and a range of options and accessories is built in.

The **UV Irradiation Source** has world best efficiency using high power LED'S. It is available either as a mono Frequency tuned to either 395 nm or 365 nm or either available as multi-frequency spectrum from 265 nm toward 405 nm.

Integrated, programmable **Forced Air Cooling** over the entire 500x400 mm area.

UNIQUE CONCEPT & SIZE

CONFIGURATION

- High component clearance <150 mm top and bottom.
- PCBA-pallets dimensions: up to (710x540) mm. Max. pallet weight: 20 kg.
- 2 power outputs.
- Combined frequencies 265 nm => 405 nm.
- Simple & stable configuration.

PRODUCTIVITY

- Super-fast curing approx. 10 seconds.
- Lamp lifespan: approx. 20.000 hours equivalent to 1.000.000 production hours.
- Attractive COO.

TRACEABILITY (SMARTBOX OPTION)

- Process tracker / Industry 4.0.
- Live process parameters log.
- Embedded trend analysis.

OPTIMIZATION

- Floor space: 900x1180 mm & facility savings.
- Energy efficient.
- Eco-friendly.

[SNAPCURE]

[WORLD'S BEST EFFICIENCY]

TECHNICAL DETAILS

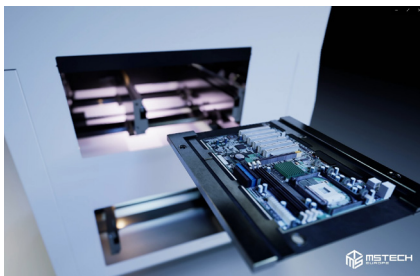
- **Electric Power Consumption:** 1800 W.
- **Curing Area:** 500x400 mm
- **Curing Side:** Top side (option top and bottom) in top conveyor or return conveyor.
- **Best Curing Distance:** 50-150 mm.
- **Power Intensity:** 300mW/cm² at 50 mm distance from substrate.
- **Cooling method:** Fans cooling.
- **No need to warm up after power on:** Instant turn on/off. It reaches the maximum light intensity instantaneously, increased lamp lifetime (20.000 h).

MULTI WAVELENGTH OPTIONS

- **395 nm:**
 - Dimensions: 900x1180x1480 mm.
 - Lamp size: 500x400 mm.
- **365 nm:**
 - Dimensions: 900x1180x1480 mm.
 - Lamp size: 500x400 mm.
- **MULTI:**
 - Dimensions: 900x1180x1480 mm.
 - UVLED Lamps: 265 nm -> 405 nm.
 - Lamp size: 500x400 mm.

FEATURES

FLEXIBLE DIMENSIONS



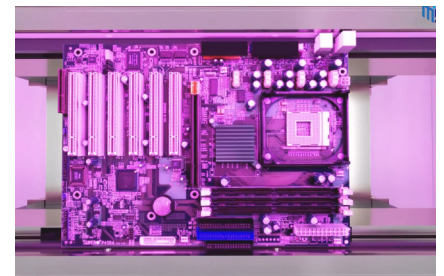
- Support for Panel PCBS and Pallets.
- From small 50 x 50 mm to full size 710 mm x 540 mm.

BOARD DETAILS



- Board width adjustment: 50-540 mm (1.97-20 in.), front rail fixed.
- Board component height: 150 mm (9.5 in.) above or below board.
- Board/pallet weight: ≤ 20 kg/m (24 lbs.) max.
- Board/pallet thickness: 0.6 mm (0.02 in.) min.; 25 mm (1 in.) max.

NO INFRARED RADIATION



Cold light source, suitable for curing all kinds of heat-sensitive materials.

Lamp Controller

- Panel Display: LCD operation.
- Power: 0-100% adjustable.
- Temperature monitoring.
- Power Supply: 110/220VAC 50/60HZ.

APPLICATION

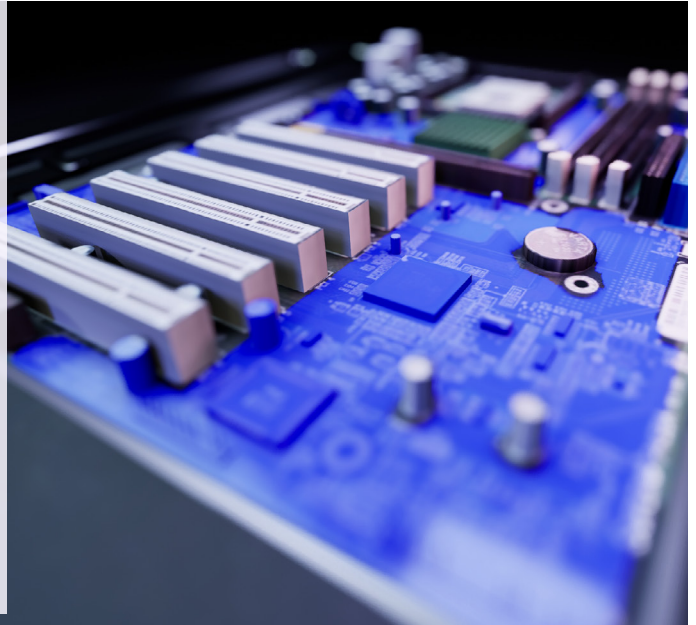
Cure of any UV curable materials including conductive, structural bonding and dielectric materials, coatings and inks.

[SNAPCURE]

[WORLD'S BEST EFFICIENCY]

// ADVANTAGES

- UV dose simple-production concept.
- Process stability and repeatability are assured with a minimal number of parameters.
- Full board area covered within one shot -even coverage: no wrinkles, no shadows.
- No additional variables, no reflector, longer lamp lifetime.
- UV LED irradiation head with powerful UV LEDs - covers full board area.
- Efficient curing area of 500x400 mm at a distance of 10 to 400 mm.



SMARTBOX OPTIONS

- » Process related sensors:
 - ESD Impurity Sensor
 - Humidity and temperature
 - UV wavelength and dose
 - More on demand
- » Dispensed geometry element trend analysis with up-stream communication.
- » Local process supervision display.
- » Industry 4.0 - SECS/Gem, UAC, Hermes, Opcon, IPC-CFX, Process Tracker & more on demand.



TEMPERATURE



HUMIDITY



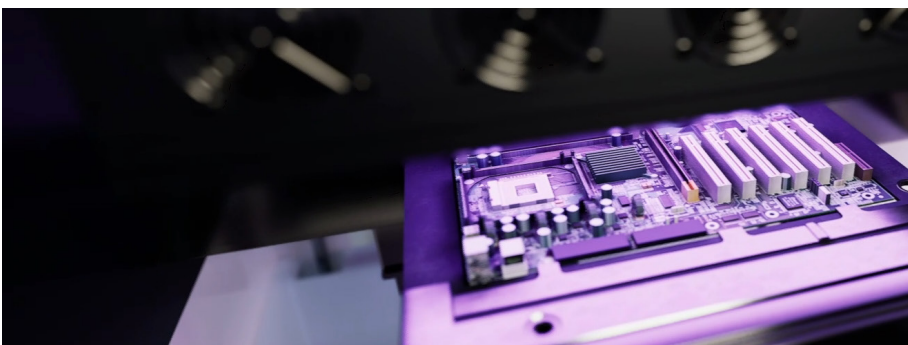
UV WAVE



INDUSTRY 4.0

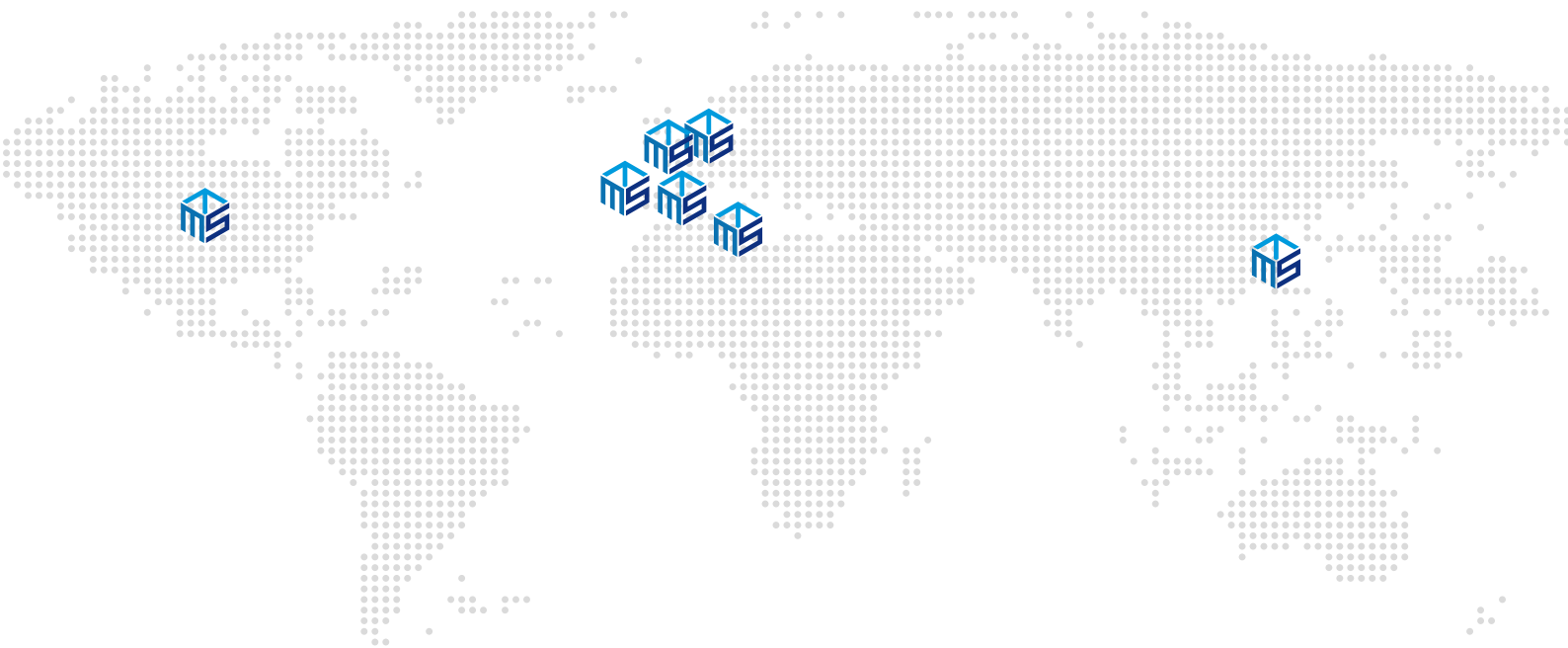


PROCESS TRACKER



**THIS
RADIATION
SOURCE HAS
WORLD'S BEST
EFFICIENCY**

GLOBAL NETWORK



 PART OF INCORPORATECHNO

WWW.MSTECHCORP.EU

FACTORYCENTER
SEOUL - BARCELONA

BUSINESSCENTER
KOREA - MEXICO - GERMANY
FRANCE - SPAIN - PORTUGAL - TUNISIA

TESTCENTER
KOREA - SPAIN - FRANCE

FACTORYCENTER
BARCELONA

Ctra. C-31, 148.4. Masia Les Planes, 20.
Camí de Les Planes. 08880 Cubelles,
Barcelona. Spain

administrative@mstechcorp.eu

BUSINESSCENTER

sales@mstechcorp.eu

services@mstechcorp.eu

