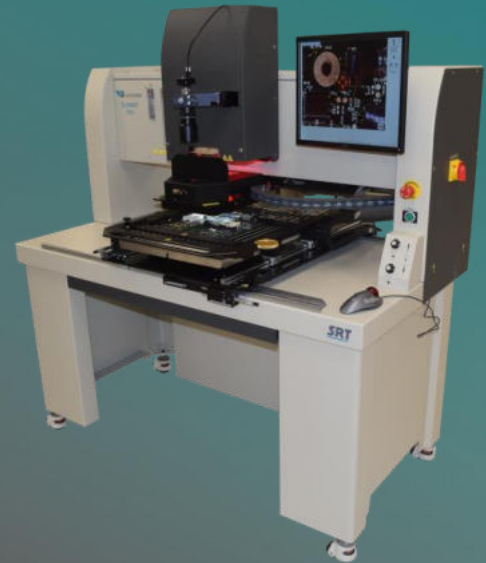
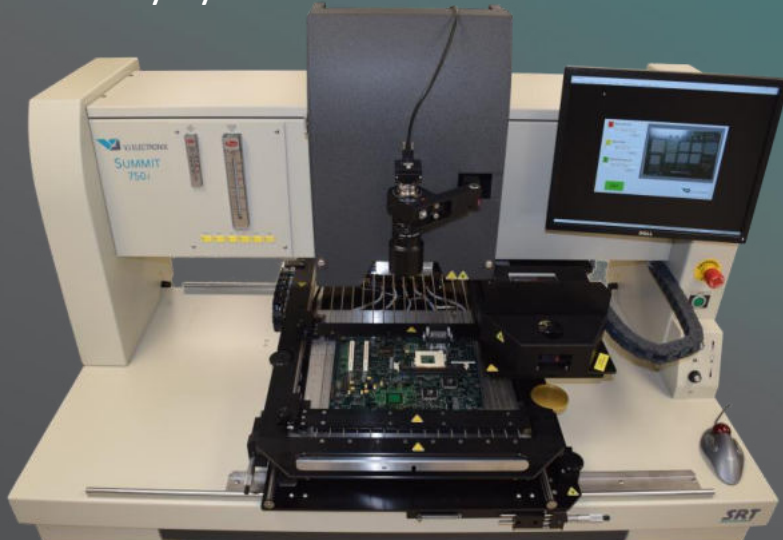


# Summit 750i

Semi-Automated Rework System

Turn-Key System. Nozzles included.



**Largest Installed Base • Excellent Thermal Performance • Process Flexibility  
Ease of Operation • Global Support • Industry Leading Reliability**

**“1-2-3-Go” Graphical User Interface** – Proprietary SierraMate™ Windows® based software provides an easy to use “1-2-3-Go” graphical user interface increasing user friendliness.

**Efficient Convection Heating** – Closed-loop temperature control ensures a more even heat distribution as compared to IR heating.

- Industry-leading speed, control, repeatability

**Industry 4.0 Compliant** – Automated data/event logging directly to your EMS.

- Enhanced profile sharing and user collaboration

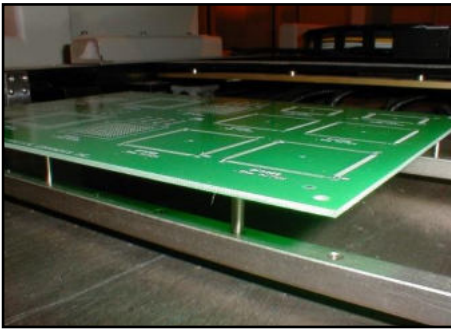
**Comprehensive Tooling** – Wide range of tooling available to meet your current and future rework needs.

**Auto Profiling Capability** – Fast and easy profile creation. Simply enter the desired product temperatures. After thermal profile is created, the entire reflow process is built automatically and ready to run.

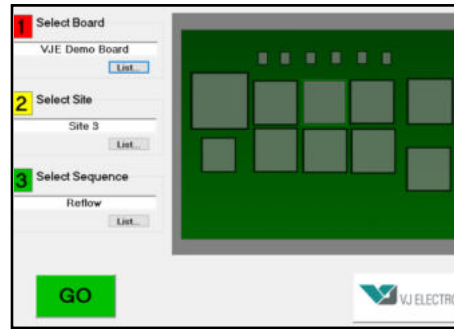
**Independent Pick and Place** – Motorized reflow head driven by an advanced motion system with programmable force control provides precision with total flexibility.

**Digital Split Imaging** – Digital split imaging allows up to four corners (and its pads) of a large component to be viewed under high magnification.

- Precise alignment of BGAs or fine-pitch QFPs



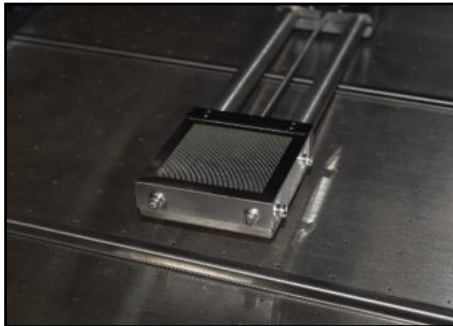
CONFIGURABLE BOARD FIXTURES



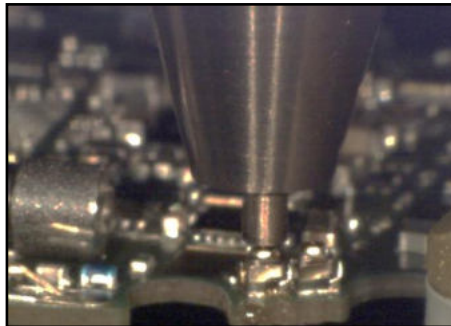
1-2-3-GO SIERRAMATE™ GRAPHICAL USER INTERFACE



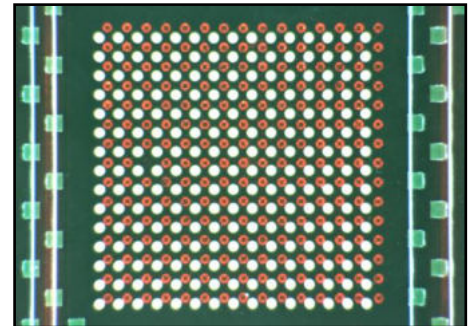
SIDE VIEW VISION SYSTEM



DUAL CONVECTION BOTTOM HEATERS



0201 REWORK



OPTICAL ALIGNMENT SYSTEM

### Technical Specifications

Placement Capability	0.0020" (50μ) mean + 3σ	
Top Heater	1.6kW Focused Convection	
Bottom Heater	4.0kW Convection Plenum	
Z-Axis Motion	Independent & Programmable Z-Height Pickup Tube Independent & Micrometer Adjust Z-Height Top Heater	
Theta Motion	Manual Adjust Theta - 360°	
Field of View	2.0" (50mm) Square	
Max Board Size	18x22" (455x560mm)	
Component Range	0.010" (0.24mm) to 8" (200mm) Connectors	
Temperature Control	K-Type Thermocouple (Closed-Loop)	
Thermocouple Jacks	6	14 (option)
Compliance	CE, CAN/CSA, UL 61010-1	
Special Features	Programmable Placement Force Control Automatic Component Height Sensing & Alignment Height	

## Why choose VJ Electronix

In a highly competitive SMT manufacturing market, quality and productivity are critical. VJ Electronix develops and manufactures all their products with this in mind. For decades, we have secured leading positions in a variety of markets through technological firsts and a variety of innovative customer-specific solutions.

VJ Electronix is the leader in PCB rework, x-ray inspection and x-ray counting systems. VJ Electronix's equipment help improve manufacturing costs and product quality.

VJ Electronix  
19 Alpha Road  
Chelmsford, MA, 01824  
USA

Phone: +1 978 486 4777  
[www.vjelectronix.com](http://www.vjelectronix.com)

VJ Offices:  
Bohemia NY  
East Haven CT  
Suzhou, China

Hartsviller, France  
Bengaluru, India  
Budapest, Hungary