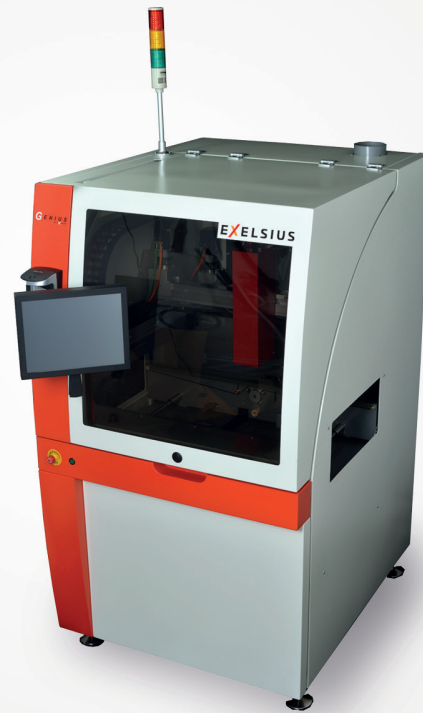
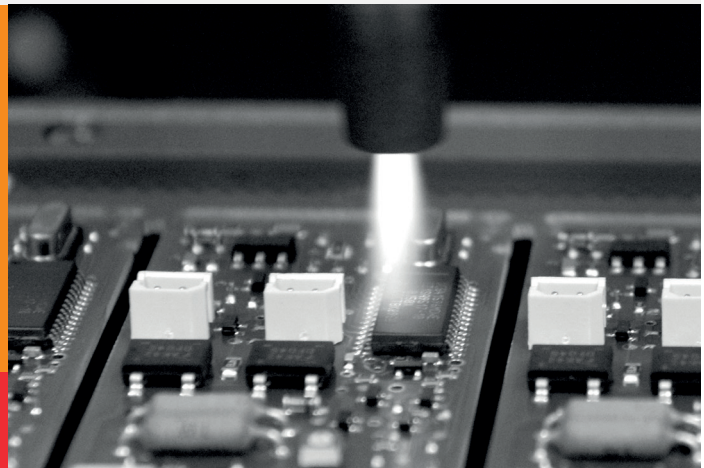


**An innovative,
3D self-programmable
and robust solution
for selective surface
activation by atmospheric
pressure plasma**



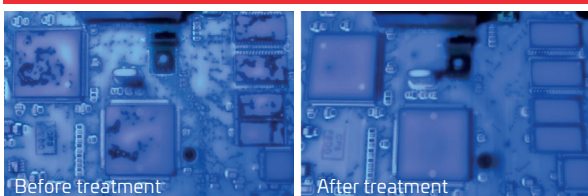
**This patented technology
allows end-users to
operate with wider
process windows for
conformal coating and
dispensing applications.**

**Genius is a unique combination
of innovative plasma technology,
embedded intelligence and
intuitive programming to improve
the wettability of the product's
surface to be coated and the
adhesion of the protective coating.**



SYSTEM AND SOFTWARE

- 2 ½ axis robot embedding an atmospheric air blown pressure plasma (AcXys)
- Optical camera and laser rangefinder for 3D self-reliant measurement and programming
- 15" touch screen with Windows based software



Before treatment

After treatment

SPECIFICATIONS

CONVEYOR

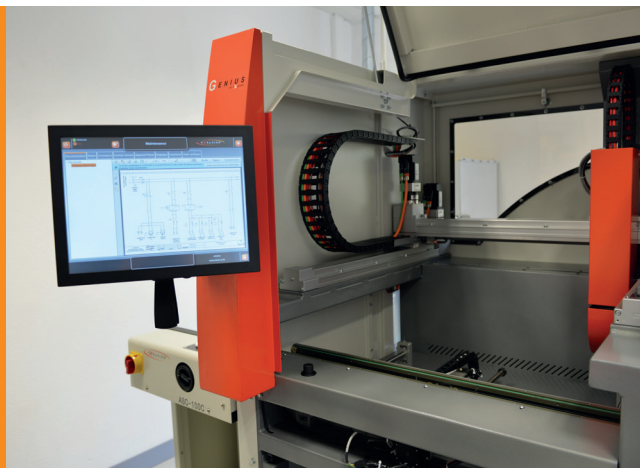
- Type : ESD belt conveyor
- Clearance : +/- 100 mm
- Working length : 50 to 500 mm
- Working width : 50 to 450 mm
- Speed : 250 mm/s
- Conveying height : 950 +/- 50 mm
- Maximum load : 3 Kg/m

OTHER STANDARD FEATURES & FACILITIES

- Dimensions (L x W x H) : 1000 x 1250 x 1800 mm
- Approx weight : 450 Kg
- Exhaust control
- Doors and safety switch
- Operation temperature : 15 to 30°C
- Relative humidity : 45 to 75 %
- SMEMA
- CE standards
- Voltage : 230 V AC – 50/60 Hz
- Power rating : 2.5 kW
- Air supply for shutters and plasma system : 6 bars – 60 L/min
- Exhaust flow : 250 m³/h
- Exhaust diameter : 125 mm

OPTIONS

- Bar code reader
- RFID reader
- MES compatible for full traceability
- Board counter
- Offline program analysis and rework
- Right to left conveyor
- Heavy duty conveyor (8Kg/m)



SURFACE ACTIVATION

Atmospheric pressure plasma technology improves the surface energy by adding in extreme surface (few nanometers) an important quantity of polar chemical functions. These polar functions generate numerous Van Der Waals interactions with the activated material, to improve its wettability and increase the adhesion of the coating. The atmospheric pressure plasma implemented is blown ; thus it allows to add in extreme surface chemical functions that are electrically neutral, which avoid any ESD phenomenon. This plasma technology also allows fast selective treatment, consistently with the shortest cycle times and selected coating zones.

These specifications are not contractual