

AOI solutions you can count on.



FX-942UV ACI / AOI

In-Line Dual Sided Optical Inspection for conformal coating and parts

Nordson Test & Inspections's advanced multiple camera imaging technology offers high-speed inspection with exceptional defect coverage. With dual sided viewing (top-down and bottom up) cameras and UV lighting the FX-942 inspects conformal coating coverage and verifies correct part assembly in SMT or THT applications, enabling users to improve quality and enhance yields.

Advanced High Power UV Lighting and newly available image processing technology integrate several techniques, including coverage inspection, color inspection, normalized correlation and rule-based algorithms, to provide complete inspection coverage with an unmatched low false failure rates.

Configurable for several line positions, the FX-942 is equally effective for coating, pre/post-cure and final assembly inspection. Off-line programming maximizes machine utilization and real-time SPC monitoring provides a valuable yield enhancement solution.

www.nordson.com/TestInspect


Nordson
TEST & INSPECTION

Features

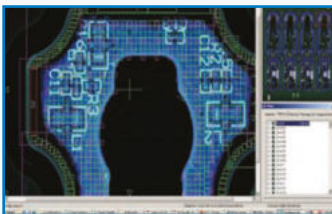
- Top down and bottom up imaging
- Optional side viewing cameras
- Proprietary UV lighting
- 100 mm clearance for tall components
- Traceability
- Optional thickness measurement

Automated Inspection for

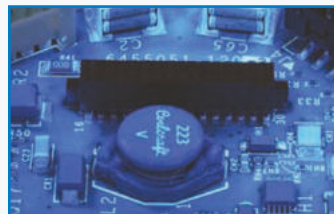
- Conformal coat coverage
- Micro Coatings / dispensed materials
- Flux coverage
- Selected areas of non-coverage
- Delamination / cracks and bubbles
- Part presence / Correct part / polarity
- SPC, barcode reading and archiving of board image with inspection results

Specifications

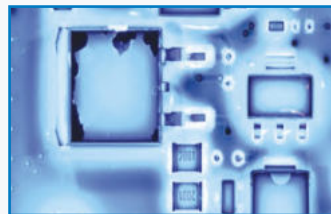
Inspection Capabilities	
FX-942UV	Multi-function system with top-down viewing, bottom up viewing and optional side cameras
Throughput	Up to 30 sq. in./sec.
Maximum Board Size	15.5" x 15.5" (395 mm x 395 mm)
Clearance	4" (100mm) top side and 2" (50mm) bottom
False Calls	<500 PPM (<0.05% typical)
Defects Detected	Coatings and dispensed material coverage, non-coverage, cracks and delamination, SMT and THT part defects.
Software	
Algorithms	Conformal Coating Inspection Color detection, OCV, OCR, Barcode recognition, both image and rules based algorithms.
Data Requirements	None
CAD Translation Package	Not required
Programming Skill Level	Technician or operator
Operating System	Windows 7
Off-line Software	Optional - Rework, Review and Program Creation Basic
SPC Software	Real-time local and remote monitoring of first pass yield, defect trends, and machine utilization.
Data Outputs	Text, SQL, ODBC, MS Access, XML
Hardware	
Material Handling	SMEMA, dual direction auto width conveyor, pass / fail signals, board clamping
Lighting	Proprietary UV Lighting multi-angle LED
Imager	Up to 18 megapixel color imaging sensor each side. 12 or 8 micron pixel size
Facilities	
Power	110-220VAC, 50/60 Hz, 15 amps
Air input	60 PSI min., 1/4" air hose, 2 CFM
Footprint	39" x 52" x 60" (1000mm x 1329mm x 1531mm)
Weight	950 lbs (430 kg)
Machine Installation	< 1 hour
Upgrades	
Optional Upgrades	Thickness measurement



Automated inspection for conformal coat.



Side angle viewing cameras.



Defect image of missing conformal coat.

For more information, speak with your Nordson representative or contact your Nordson regional office

Nordson Test & Inspection Europe, SEA, Africa
ti-sales-eu@nordson.com

Nordson Test & Inspection Americas
ti-sales-us@nordson.com

Nordson Test & Inspection China
ti-sales-cn@nordson.com

Nordson Test & Inspection Japan
ti-sales-jp@nordson.com

Nordson Test & Inspection Singapore
ti-sales-eu@nordson.com

Nordson Test & Inspection Taiwan
ti-sales-tw@nordson.com

Nordson Test & Inspection Korea
ti-sales-korea@nordson.com