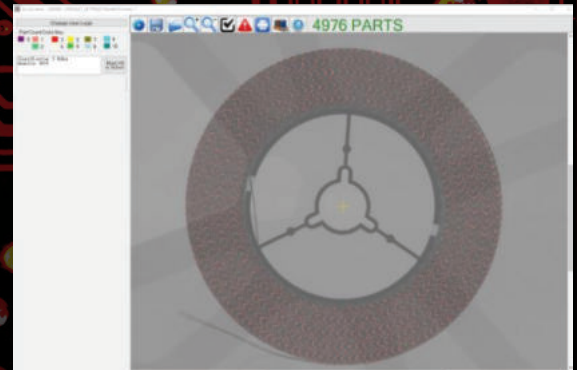


XQUICK II PLUS AUTOLOAD

X-ray Component Counter

DATASHEET



with AccuCount™ Technology

FEATURES & BENEFITS

Increased throughput, accuracy and confidence in your high volume component counting.

Key Features:

- + High Speed Component Counting
- + 2X Productivity of the XQuik II Plus
- + Highest Available Image Resolution
- + User Friendly, One-touch Operation
- + AccuCount™ Technology
- + AI Powered Component Recognition
- + Ultra-low Parallax Distortion
- + Flexible MES/ERP Integration

2X Productivity

Integrated conveyor system doubles productivity by allowing barcode scanning, loading, unloading, and label application while counting up to four reels in <30 seconds.

AI Technology

No programming or teaching required! AI technology automatically recognizes components and built-in sensors allow for automatic reel location.

Reliable Results

Superior x-ray technology and ultra-low parallax distortion delivers the highest image contrast and resolution and, as a result, the highest accuracy <99.8% on counted components.

Industry 4.0 Ready

Easily integrate with a robot for advanced automation. Open Interface allows data to be uploaded directly to your ERP, optimizing inventory and resource management.

XQUIK II PLUS *AUTOLOAD* - TECHNICAL SPECIFICATIONS

PERFORMANCE	Maximum Reel Diameter	15in (380mm) or (4)7in (178mm)
	Maximum Reel Height	2.4 in (60mm)
	Cycle Time:	<30 seconds
	Accuracy:	>99.8%
	Minimum Component Size:	01005 (0402mm)
	Barcode Scan:	Manual Scan (Automatic Option Available)
	Applications:	Autoload: Reels Manual Load: Reels, Tubes, Trays, ESD Bags, PCB Insp.

INSTALLATION	Machine Footprint:	71 x 31 x 78in (1803 x 787 x 1980mm)
	Machine Weight:	925lb (420kg)
	Maximum Power:	1500W
	Electrical Connection:	100 – 240 VAC
	Detector Type:	High Contrast, Ultra Fast, Linear

TECHNOLOGY	Cabinet Shielding:	<0.1 mR/hr (1.0 uSV/hr)
	Sample Size:	15.75 x 15.75in (400 x 400mm)
	Imaging Resolution:	100µm
	Operating System:	Microsoft Windows 10
	Software:	VJE's Proprietary Vi3 & AccuCount™ Software
	X-ray Source:	Sealed
	Power/Voltage/Current:	180W / 70kV / 3.5mA
	Certification:	IEC, CE, & FDA

OPTIONAL FEATURES
24" High Resolution Flat Panel LCD Display in lieu of standard monitor
Bar Code Reader (Manual)
Bar Code Reader (Automatic)
Label Printer - Dymo LabelWriter 450 Printer or similar
Black Work Bench, 30x48x25/32.5H, Leveling Feet, PC Shelf, includes shipping box
Safety Shield with Integrated Light Curtain

Why Choose VJ Electronix – VJE combines years of industry leadership, technical expertise, and product development knowledge to manufacture state-of-the-art x-ray and SMT rework systems. VJE is your one-stop source for intelligent solutions that boost the productivity of high-value, high-precision applications in electronics manufacturing and industrial markets worldwide. VJE is affiliated with VJ Technologies Inc., a global leader in x-ray technology.



Phone: 1-978-486-4777
www.vjelectronix.com
electronixsales@vjt.com