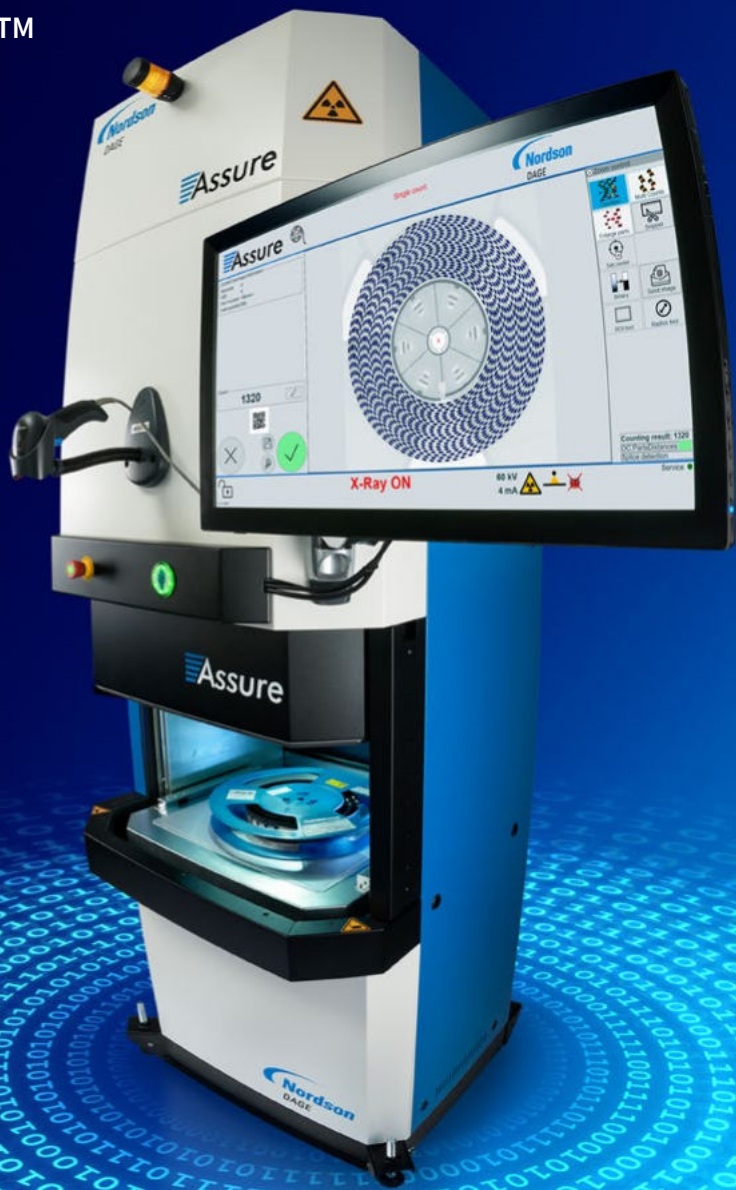


Count on us™  
**Assure**



# **Assure™** Series

**X-ray Component Counters**

# The Electronics People

Founded in 1954, Nordson Corporation is a market leading industrial technology company with annual revenues of over \$2.1 billion and more than 7,500 employees worldwide.

Nordson offers a wide range of products which are focused on providing process, test and inspection solutions for the electronics and semiconductor industry. Whether you need to maintain live component inventory using Nordson DAGE X-ray counting technology, or check for package level delamination with Nordson SONOSCAN acoustic inspection, we provide best in class technology solutions for PCBA and package level electronics manufacture, and the global support network to keep you running and minimize downtime.

Guaranteed support from Nordson's worldwide network



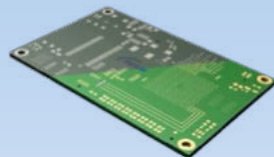
**Nordson**  
DAGE

X-ray component counting and live inventory



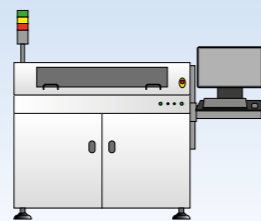
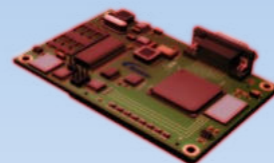
**Nordson**  
MARCH

Plasma treatment and processing equipment



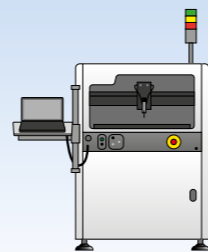
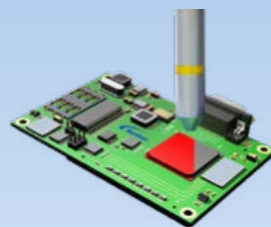
**Nordson**  
SELECT

Selective soldering systems



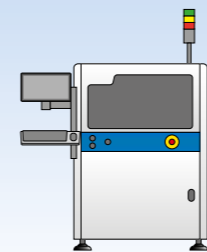
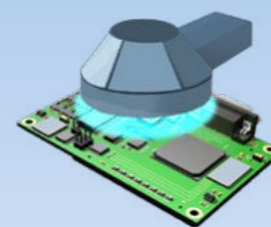
**Nordson**  
ASYMTEK

Automated fluid dispensing and conformal coating systems



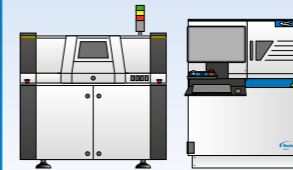
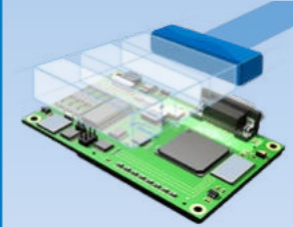
**Nordson**  
YESTECH

Advanced automated optical metrology inspection solutions



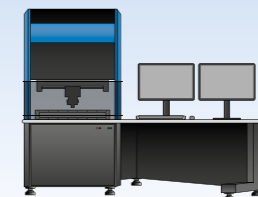
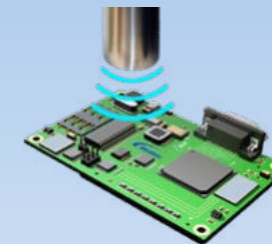
**Nordson**  
MATRIX  
DAGE

High speed in-line and high resolution lab based X-ray inspection



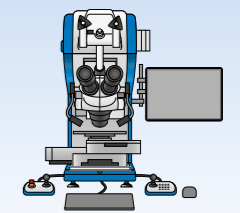
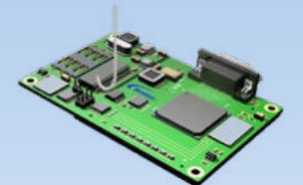
**Nordson**  
SONOSCAN

Acoustic micro imaging solutions



**Nordson**  
DAGE

Bond testing and materials testing quality control solutions





# Live Inventory

The correct material in the correct quantity, at the right time in the right place.

Inventory knowledge is essential for modern industry. Whether you are a SMT manufacturer, supplier or broker, live assurance of correct inventory in your MRP system at all times minimizes stock, labor, errors and costs ensuring customer confidence and trust. Keep your SMT lines running.

Ensure your production is smooth running and cost efficient with Assure™.



# Your Live Inventory Solution

Assure™ is the fastest, simplest and most reliable way to implement live component inventory management into your organization. Intelligent, simple, fast, and trustworthy, Assure enables you to increase productivity and minimize component shortage downtime.

## Intelligent

Specialized logical algorithms and self-learning capabilities empower operators to add (not teach) new component types without needing cumbersome libraries that require programming, or reliance on “cloud-only” support.

## Simple

One button operation and an intuitive touchscreen interface means users can learn to operate Assure within minutes.

Installation is easy with an exceptionally small footprint and system weight. Maintenance free operation minimizes disruption during day to day use.

## Fast

Optimized for speed, Assure counts components fast so you can process inventory sooner, and minimize labor time and cost. Count a single reel in approximately 10 seconds and four reels under 15 seconds.

## Trust

Assure validates results immediately and automatically with accuracy exceeding 99.9% on most components, guaranteeing the quality of the count.



# Enterprise Integration

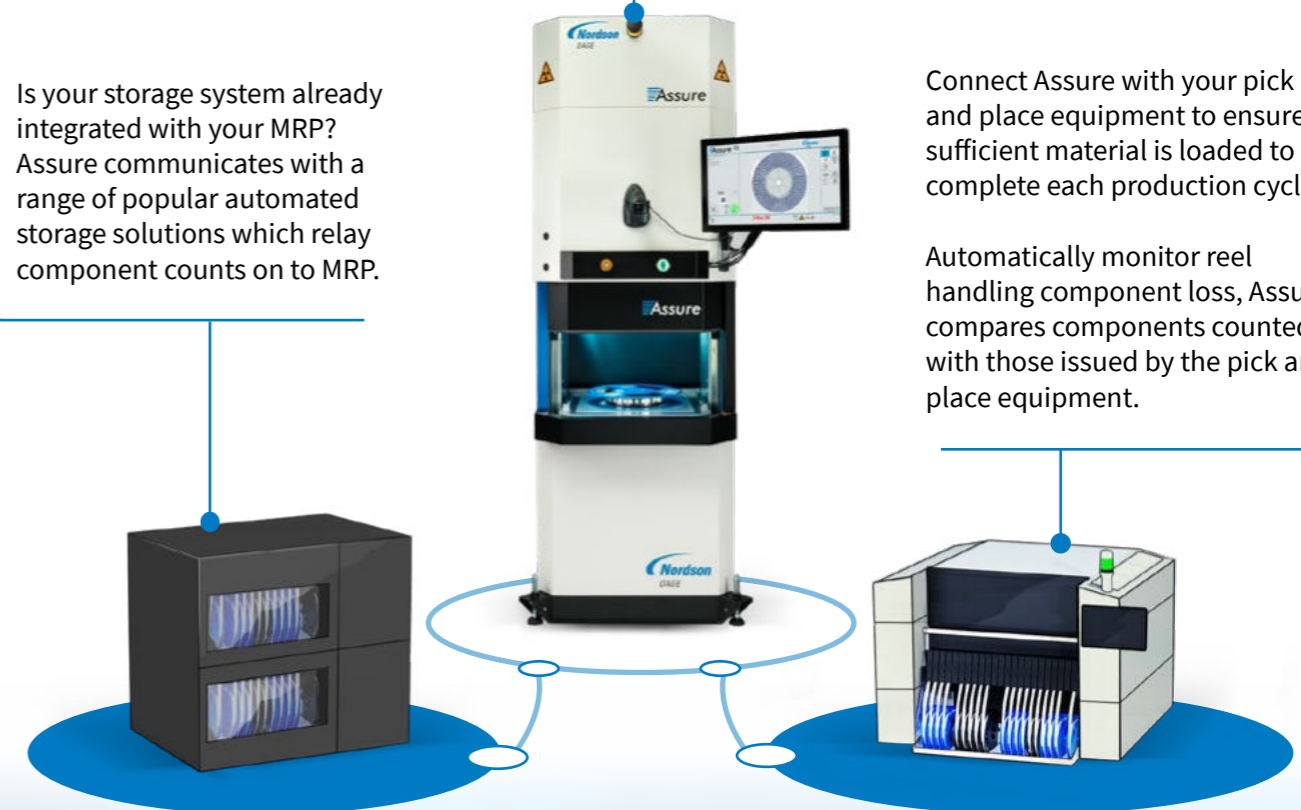
Save time and guarantee precise, live inventory knowledge within the factory by interfacing Assure to your ERP, MRP, pick and place and storage systems.

Assure seamlessly integrates into every major ERP system including SAP and Oracle so you can automatically plan and purchase new materials as soon as they are counted.

Is your storage system already integrated with your MRP? Assure communicates with a range of popular automated storage solutions which relay component counts on to MRP.

Connect Assure with your pick and place equipment to ensure sufficient material is loaded to complete each production cycle.

Automatically monitor reel handling component loss, Assure compares components counted with those issued by the pick and place equipment.





# Intelligent Features

## Plug and play

Be up and running fast. Assure™ uses advanced algorithms to identify new components and does not rely on libraries or require a connection to the cloud.

A true plug-and-play solution, Assure does not require hours of programming.

## Group counting

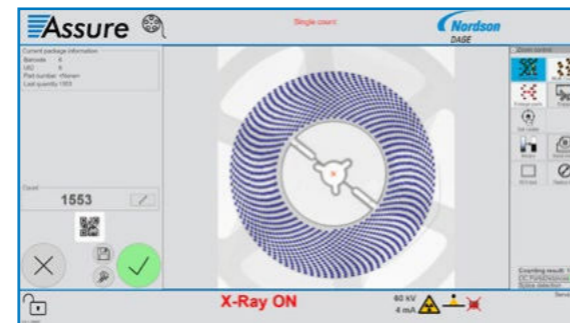
Group inventory together with Group counting, even in Quad Count mode.

Easily report counting results for customer or other inventory groups together at once.

Ensure all materials in the group are counted at the same time. Group counting mode can automatically reject other material counts while the group is being counted, ensuring all reels in the group stay together.

## BOM Import

BOM data contains useful information such as UID, customer part numbers, manufacturing part numbers and storage locations for complete traceability.



Intuitive touchscreen user interface.

Assure  
Inventory report: Reels grouped by article

Article	Article	Reel count	Total stock
1	687 service(Service)	9/27/2019 12:16:12PM	
2	1,596 service(Service)	9/27/2019 12:17:13PM	
3	1,553 service(Service)	9/27/2019 12:17:23PM	
		Reel count: 3	Total stock: 3,006
4	5,000 service(Service)	9/27/2019 12:16:23PM	
		Reel count: 1	Total stock: 5,000
5	420 service(Service)	9/27/2019 12:16:50PM	
		Reel count: 1	Total stock: 420
6	1,320 service(Service)	9/27/2019 12:17:01PM	
		Reel count: 1	Total stock: 1,320

Easy reporting of groups of materials, ideal for customer consignment inventory.

# Count on us™

Quad reel count

Single and spliced reel count

ESD and moisture sensitive bags

Trays

Snippets

Tubes

Automatic tape splice detected in yellow region.

# Specifications at a Glance



Performance	
Maximum reel diameter	43 cm / 17"
Maximum reel height	10 cm / 4"
Processing time: single reel	~ 10 s (any size or quantity)
quad count	< 15 s (any combination of 7" reels)
Accuracy	> 99.9 % (most components)
Minimum component size	01005

Installation	
Footprint (W x D x H)	0.76 m x 0.88 m x 2.25 m / 30" x 34" x 88"
Weight	360 kg / 790 lbs
Power	~ 110...230V, 16 A, 50/60 Hz
Max. power consumption	800 W
Grounding	0.75 mm <sup>2</sup> (via main power supply)
Noise emission	< 60 dB
Operating temperature/humidity	15 °C to 28 °C / 30 -70% non condensing
ESD	DIN EN 61340-5-1

Software	
Operating system	Microsoft Windows 10 Pro
Application software	ASSURE.Shell

Detector	
Pixel area	43 x 43 cm (17" x 17")
Power dissipation	42 W
Resolution	139 µm (3.6 lp / mm)

X-Ray Module	
Power	240 W
Voltage	60 kV
Current	4 mA
Shielding	<0.5 µSv / hour 5 cm from surface, meets all international standards

**Americas** + 1 760 930 3307  
sales@nordsondage.com

**Europe** +44 1296 317800  
oc-info@nordson.com

**China** +86 512 6665 2008  
sales.ch@nordsondage.com

**Germany** +49 9126 29498 00  
oc-info@nordson.com

**Japan** +81 3 5639 7020  
sales.jp@nordsondage.com

**Korea** +82 31 462 9642  
korea.at.cs@nordson.com

**South East Asia** +65 6552 7533  
sales.sg@nordsondage.com

**Taiwan** +886 2 2902 1860  
globalsales@nordsondage.com

**United Kingdom** +44 1296 317800  
globalsales@nordsondage.com



Specifications subject to change without prior notice.  
Copyright © Nordson DAGE 2019. Other products and company names mentioned are trademarks or trade names of their respective companies.

Nordson DAGE products are patent protected and covered by the patent listed at [www.nordson.com/dagepatents](http://www.nordson.com/dagepatents).

BR-XR-311019-V1