

AUTOTRONIK

Fertigungssysteme für die **Elektronikindustrie**

AUTOTRONIK-SMT GmbH

Sulzbacher Str. 111
D-92224 Amberg

Tel. +49 (0) 9621-600 691
Fax +49 (0) 9621-600 692

office@autotronik-smt.com
www.autotronik-smt.de

MODEL: AP435

FULLY-AUTOMATIC INLINE STENCIL PRINTER

- ▶ Automatic conveyor width adjustment
- ▶ Dual squeegees with dual-stroke control for efficient solder paste use
- ▶ Temperature, humidity & pressure monitoring
- ▶ Solid case iron base lifting structure
- ▶ Fast job setup and changeover
- ▶ Parallel separation of stencil and PCB with programmable speed control for well defined prints
- ▶ Integrated wet- / try- / vacuum-cleaning
- ▶ 2D-inspection (optional)
- ▶ Solder Paste Supplemental and Glue Dispense System (optional)
- ▶ Print repeatability: +/- 0.01 mm
- ▶ Stencil frame size: 470 x 370 mm to 736 x 736 mm
- ▶ Maximum PCB size: 400 x 340 mm



Innovative
Features



Unbeatable
Service



Worldwide
for you!



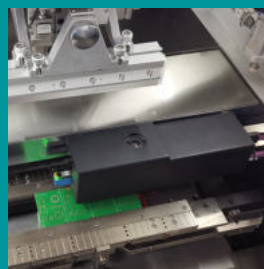
Specialist in small
and medium-sized
manufacturing.



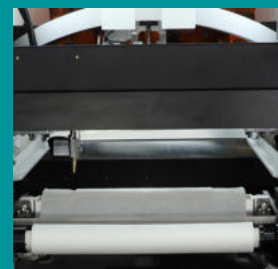
Quality &
innovation at
a fair price.



All from
one hand.



Positioning camera system to teach and recognize the marks of PCB and stencil by up & down camera viewing function.



Underside stencil cleaning system with sprinker. Various combinations of wet / dry and vacuum cleaning are available for cleaning the stencils.

MODEL: AP435

FULLY-AUTOMATIC INLINE STENCIL PRINTER

SPEZIFICATIONEN

- PCB min Size: 50 x 50 mm
- PCB max Size: 400 x 340 mm
- PCB Thickness: 0.4 to 6 mm
- Stencil Frame Size: 470 x 370 mm to 736 x 736 mm
- PCB Warpage: < 1% of PCB diagonal line
- Repeatability: +/- 0.01 mm
- Print Accuracy: +/- 0.025mm
- Print Speed: 6 to 200 mm/s (servo controlled)
- Transport Cycle time: 7s (exclude printing&cleaning)
- Transport Height: 900 +/- 40mm
- Transport Direction: left-right/right-left/
left-left/right-right
- Transport Speed: max. 1500 mm/s
- Transport Way: One stage
- PCB Fixture: side clamp, magnetic support pins,
vacuum toolings
- Support System: conveyor stage and vacuum
- Interface: SMEMA
- Squeegee Type: Metal / Plastic (45/55/60 degree)
- Squeegee Pressure: 0 - 15 kg (motorized control)
- Print Mode: single or double side printing
- Cleaning System: Dry / Wet / Vacuum
- Camera / FOV: CCD / FOV 7x9 mm
- Fiducial Type: Circular / Square / Triangular / etc.
- Fiducial Size: 0.5 to 3 mm
- X,Y,R Adjustment: X&Y +/- 10 mm, R +/- 2°
- Environment Monitoring: Temperature & Humidity real-time
monitoring
- Operating System: Industrial PC with Windows 10
- Power supply: 230V, 50-60 Hz, 3kW
- Pressure: 75 psi (5.5 bar)
- Overall dimensions: 1220 x 1355 x 1500 mm (L x W x H)
- Machine weight: approx. 1000 kg

